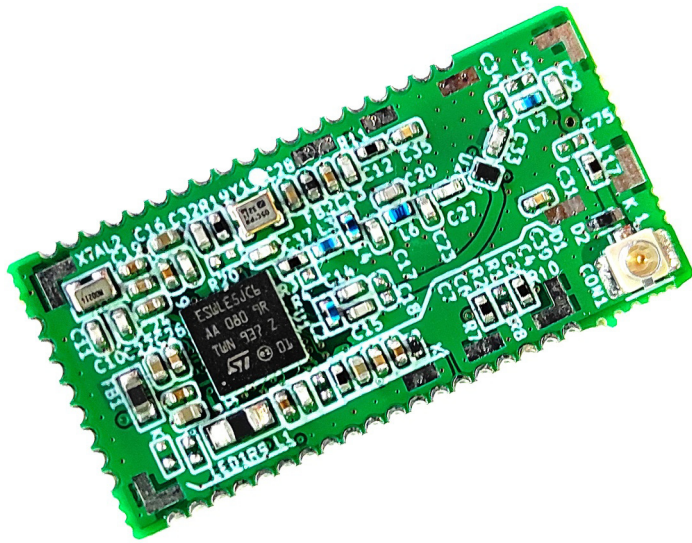


NebuLink Node NLN 500a (LoRaWAN)



Applications

- Building Automation & Monitoring
- Inventory Management
- Environmental Monitoring
- Industrial Monitoring
- Smart Metering & Lighting Solutions
- Smart Flood Sensors
- Smart Street Lighting
- Smart City Network
- Smart Waste Management
- Smart Agriculture

NebuLink Node NLN500a is a compact and powerful Node for LoRa application. It is designed using STM32WL - the world's first wireless microcontroller to integrate a LoRa transceiver.

It is enriched with multiple interfaces, digital and analog I/Os and memory to perform any IoT operations. It can easily integrate in any LoRa based network and perform the operation.

Features

- Compact size 16 x 32.6 x 3.5 mm
- LoRa[™] modulation technology
- Powered by ARM[™] Cortex M4
- Storage: 256KB flash and 64 KB RAM
- Frequency band: EU863-870 MHz, IN865 MHz
- Sensitivity: Down to -135 dBm (SF12)
- Serial Interfaces: 2 x SPI, 3 x I2C, 2 x USART, 1 x LPUART
- Supports up to 43 Digital inputs and outputs
- Analog inputs
- Ultra low power design
- Operates on low power supply from 1.8 V~3.6 V
- RF interface optimize up to 50Ω
- Output power level upto +20 dBm
- Communication Range up to 10000m (Line of Sight)*
- Pre-certified according to EN 300 220
- Hardware based encryption upto AES 256-bits
- True random number generation

*Note: * Estimated based on ideal conditions with limited sources of interference*

For more information contact at <https://www.nebulae.io> or sales@nebulae.io

System Level Solutions
USA | India | UK

Tel.: 91-2692-232 501 / 502 / 001-408-852-0067 / 001-408-705-2339
E-mail: info@siscorp.com • Website: www.siscorp.com