

## SUBJECT: The Things Node & UNO installation problems

I have recently ordered "THE THINGS NETWORK KIT" and have successfully installed the Gateway.

However, have serious difficulties to get the 'Deviceinfo' program up & running.

These are well known issues and a many people spending a lot of effort to get it fixed.

On one of my windows 8 Pro computers, the port was disabled, when trying the upload, the sketch. This computer works fine when making use of standard Arduino & Raspberry HW.

I have reinstalled all SW to another Windows 7 Pro computer, there the COM1 is active. However same kind of upload problems. Even after installing the FDTI AVR drivers.

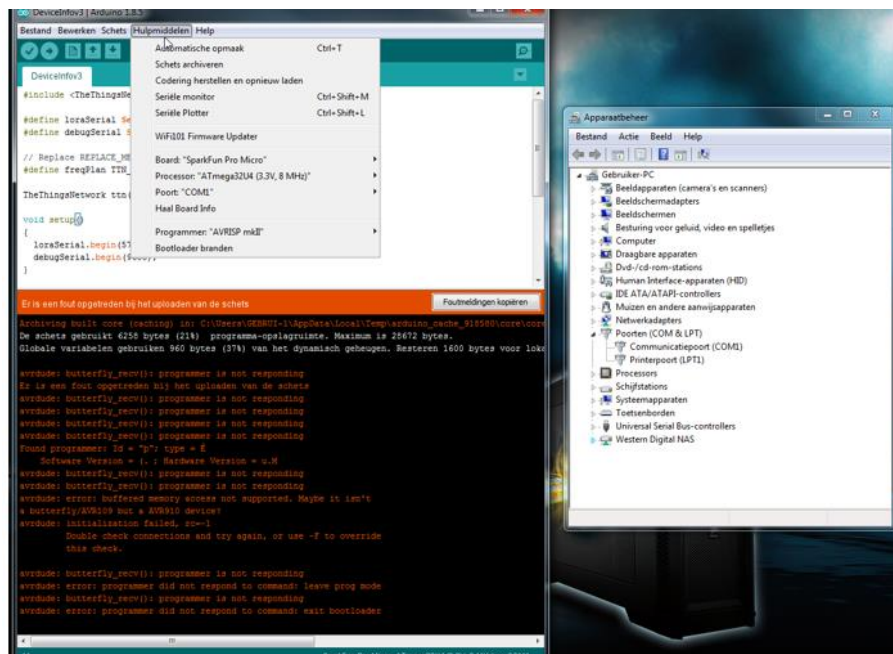
Also, did make use of troubleshooting guidelines: "Bricked" procedure. Without success.

Looking forward for getting the golden tips & to make it a Plug & Play installation. So, it can be used in STEM school environment.

Have set preferences Verbose upload ON: Upload is starting to make use of COM1:

Howeve,r get still an error: programmer not responding

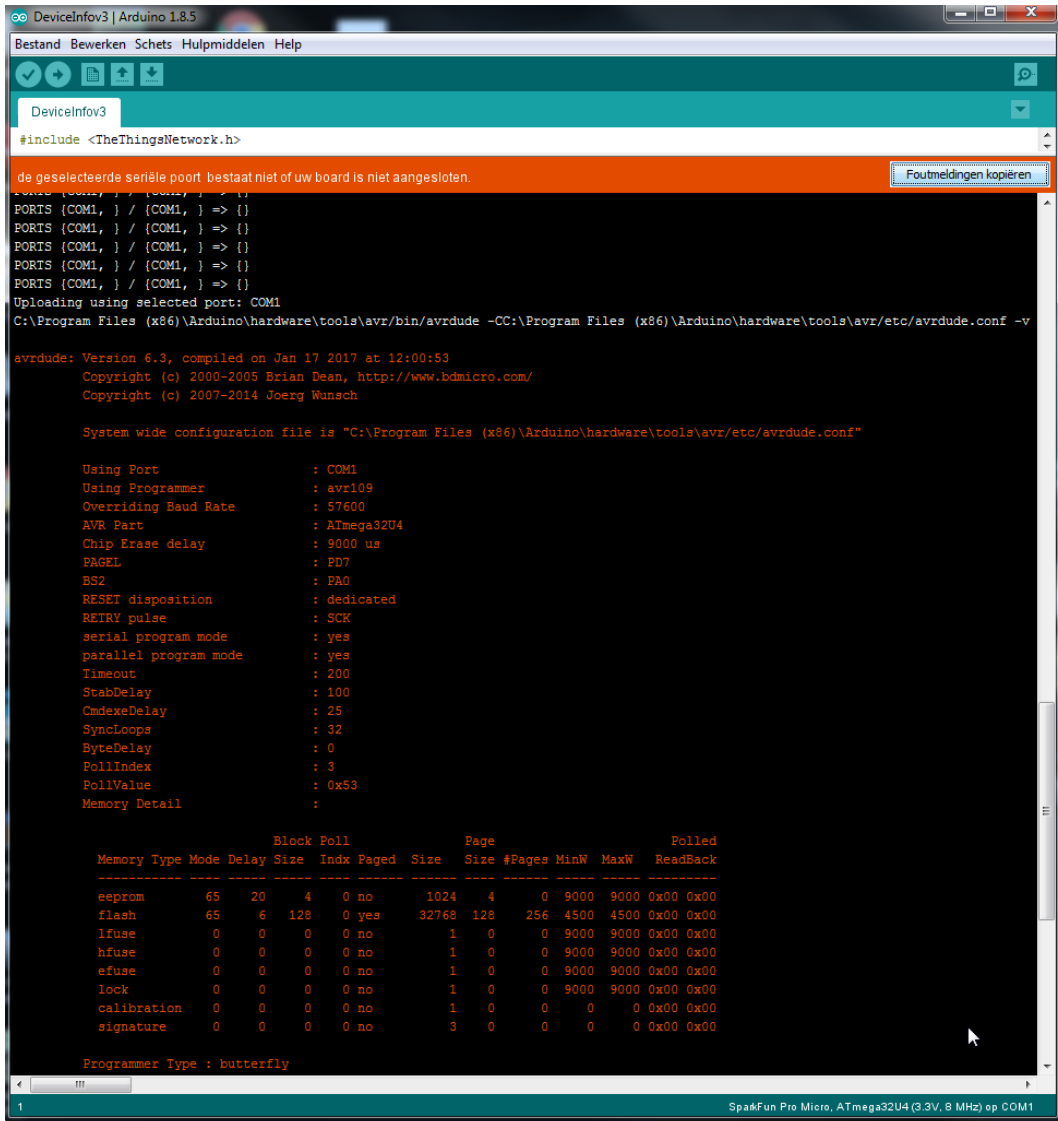
Annex: screen shots



Install problems with  
The Things Node & UNO

Avrdue: butterfly\_rcv():  
programmer is not responding

Also with Bricked procedure ,  
still not working



```
DeviceInfov3 | Arduino 1.8.5
Bestand Bewerken Schets Hulpmiddelen Help
DeviceInfov3
#include <TheThingsNetwork.h>
de geselecteerde seriële poort bestaat niet of uw board is niet aangesloten.
Foutmeldingen kopiëren

Programmer Type : butterfly
Description      : Atmel AppNote AVR109 Boot Loader

Connecting to programmer: .avrdude: butterfly_recv(): programmer is not responding

avrdude: butterfly_recv(): programmer is not responding
avrdude: butterfly_recv(): programmer is not responding
avrdude: butterfly_recv(): programmer is not responding
avrdude: butterfly_recv(): programmer is not responding
avrdude: butterfly_recv(): programmer is not responding
Found programmer: Id = " "; type = @
  Software Version = -.t; Hardware Version = ".6
avrdude: butterfly_recv(): programmer is not responding
avrdude: butterfly_recv(): programmer is not responding
avrdude: error: buffered memory access not supported. Maybe it isn't
a butterfly/AVR109 but a AVR910 device?
avrdude: initialization failed, rc=-1
  Double check connections and try again, or use -F to override
  this check.

avrdude: butterfly_recv(): programmer is not responding
avrdude: error: programmer did not respond to command: leave prog mode
avrdude: butterfly_recv(): programmer is not responding
avrdude: error: programmer did not respond to command: exit bootloader

avrdude done. Thank you.

de geselecteerde seriële poort
bestaat niet of uw board is niet aangesloten.
```